

Stein 100 Breader



Stein 100 Breeder

Designed for a wide range of flour and free-flowing coatings

Breading recirculation system virtually eliminates breading jams

Available with level glide or flip discharge

Easy to operate, maintain and clean

Standard Features:

- Rotating Vibrator
- Sifter
- Sprinkle Conveyor – 3/8 in. FF Belt
- Main Belt - Flat Flex, 3/8 in. or 1/2" pitch
- Blower
- Stainless Steel Caster Rigs

Options:

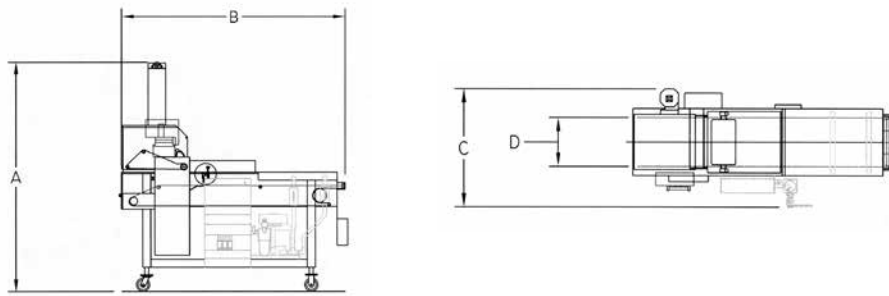
- UL Approval
- Tie Bar Connections
- Standard Spare Parts Kit - Hydraulic or Electric
- V-Groove Casters

Apply to All Models:

- Belt Speed – Adjustable
 - Electric – 15-40 FPM (4.6-12 m/min.)
 - Hydraulic – 10-60 FPM (3-18 m/min.)



Stein 100 Breeder



Model	16		24		34	
Dimensions	USA	Metric	USA	Metric	USA	Metric
A. Height	83.7-88.7 in.	2126-2253 mm	83.7-88.7 in.	2126-2253 mm	83.7-88.7 in.	2126-2253 mm
B. Length	84 in.	2133.6 mm	84 in.	2133.6 mm	84 in.	2133.6 mm
C. Width	41 in.	1041.4 mm	49 in.	1245 mm	59 in.	1499 mm
D. Usable Belt Width	14.5 in.	368.3 mm	22.5 in.	571.5 mm	32.5 in.	825.5 mm
Breeder Capacity - Free Flowing	Minimum	70 lbs. / 21 kg	120 lbs. / 54.4 kg	170 lbs. / 77 kg		
	Maximum	115 lbs. / 52 kg	200 lbs. / 90.7 kg	280 lbs. / 127 kg		
Breeder Capacity - Flour	Minimum	75 lbs. / 34 kg	130 lbs. / 59 kg	180 lbs. / 81.6 kg		
	Maximum	125 lbs. / 56.7 kg	215 lbs. / 97.5 kg	300 lbs. / 136 kg		
Product Feed/Discharge Height	30-44 in.	965.2-1172 mm	38-44 in.	762-1176 mm	38-44 in.	762-1176 mm
w/ Flip Discharge Height	32-37 in.	812.8-940 mm	32-37 in.	812.8-940 mm	32-37 in.	812.8-940 mm
Conveyor Belt						
Main - Stainless steel flat flex - 1/2" (12.7 mm) P or stainless steel flat flex - 3/8" (10 mm) P	Width	16 in. / 406.4 mm	24 in. / 610 mm	34 in. / 864 mm		
Sifter						
Stainless steel flat flex - 3/8" (10 mm) P x .050	Width	6 in. / 152.4 mm	6 in. / 152.4 mm	6 in. / 152.4 mm		
Sprinkle Conveyor						
Stainless steel flat flex - 3/8" (10 mm) P x .050 or stainless steel flat flex - 1/2" (12.7 mm) P x 0.50	Width	4 in. / 101.6 mm	4 in. / 101.6 mm	4 in. / 101.6 mm		
Total Hydraulic Usage at Belt Speed of 40 FPM and 900 PSI Pressure at Machine Manifold		16 GPM / 117 lpm	16 GPM / 117 lpm	16 GPM / 117 lpm		
Hydraulic Drive GPM (900 PSI Max) at 40 FPM; lpm (6205 kPa 12 m/min Max) at 12 m/min.						
Belt Drive	4 GPM 90 RPM	15 lpm 90 RPM	4 GPM 90 RPM	15 lpm 90 RPM	4 GPM 90 RPM	15 lpm 90 RPM
Vertical Screw	7 GPM 253 RPM	26.5 lpm 253 RPM	7 GPM 350 RPM	26.5 lpm 350 RPM	7 GPM 350 RPM	26.5 lpm 350 RPM
Sifter	0.7 GPM 116 RPM	2.6 lpm 116 RPM	0.7 GPM 116 RPM	2.6 lpm 116 RPM	0.7 GPM 116 RPM	2.6 lpm 116 RPM
Rotating Vibrator	0.7 GPM 96 RPM	3 lpm 96 RPM	0.7 GPM 120 RPM	3 lpm 120 RPM	0.7 GPM 120 RPM	3 lpm 120 RPM
Sprinkle Conveyor	1 GPM 174 RPM	3.8 lpm 174 RPM	1 GPM 174 RPM	3.8 lpm 174 RPM	1 GPM 174 RPM	3.8 lpm 174 RPM
Maximum Hydraulic Usage	13.4 GPM	50.7 lpm	13.4 GPM	50.7 lpm	13.4 GPM	50.7 lpm
Electric Drive 230/460/3/60						
Belt Drive	.75 HP 850 RPM 3.4/2.1 AMPS	.37 kW 1725 RPM	.75 HP 1725 RPM 3.0/1.5 AMPS	.37 kW 1450 RPM	.75 HP 1725 RPM 3.0/1.5 AMPS	.37 kW 1450 RPM
Vertical Screw	.13 HP 47 RPM 3.4/2.1 AMPS	.37 kW 1725 RPM	.5 HP 1725 RPM 2.0/1.0 AMPS	.37 kW 1725 RPM	.5 HP 1725 RPM 2.0/1.0 AMPS	.37 kW 1725 RPM
Sifter	.13 HP 47 RPM 0.07 AMPS	.12 kW 57 RPM 3.6 AMPS	.16 HP 57 RPM 3.6 AMPS	.12 kW 57 RPM 3.6 AMPS	.16 HP 57 RPM 3.6 AMPS	.12 kW 57 RPM 3.6 AMPS
Blower - Gast	1.0 HP 3450 RPM 3.2/1.6 AMPS	.75 kW 3450 RPM 3.2/1.6 AMPS	1.0 HP 3450 RPM 3.2/1.6 AMPS	.75 kW 3450 RPM 3.2/1.6 AMPS	1.0 HP 3450 RPM 3.2/1.6 AMPS	.75 kW 3450 RPM 3.2/1.6 AMPS
Rotating Vibrator	.13 HP 47 RPM 0.7 AMPS	.12 kW 57 RPM 3.6 AMPS	.16 HP 57 RPM 3.6 AMPS	.12 kW 57 RPM 3.6 AMPS	.16 HP 57 RPM 3.6 AMPS	.12 kW 57 RPM 3.6 AMPS
Sprinkle Conveyor	.13 HP 47 RPM 0.7 AMPS	.12 kW 57 RPM 3.6 AMPS	.16 HP 57 RPM 3.6 AMPS	.12 kW 57 RPM 3.6 AMPS	.16 HP 57 RPM 3.6 AMPS	.12 kW 57 RPM 3.6 AMPS
Crating Dimensions						
Length	90 in.	2286 mm	90 in.	2286 mm	90 in.	2286 mm
Width	49 in.	1246 mm	57 in.	1448 mm	60 in.	1524 mm
Height	90 in.	2286 mm	90 in.	2286 mm	90 in.	2286 mm
Gross shipping weight	1353 lbs.	614 kg	1265 lbs.	574 kg	1780 lbs.	807 kg
Utility Drawing	Hydraulic	U010-25-0003		U010-25-0003		U010-25-0003
	Electric	U010-25-0003		U010-25-0003		U010-25-0003



We are your single source for profitable processing solutions

JBT FoodTech can provide you with portioners, freezers and everything in between – including process control, food product development assistance, operator training and a full range of customer support alternatives.

Our Food Technology Centers have served leading processors in the development of many of the world's most popular food brands. Learn how to increase your processing potential by contacting your JBT FoodTech Account Manager or by visiting our website.

We're with you right down the line.™

www.jbtfoodtech.com



www.jbtfoodtech.com

North America

JBT FoodTech
1622 First Street
Sandusky, OH 44870
USA
Phone +1 419 626 0304
Fax +1 419 626 9560
process-solutions@jbt.com

Europe

JBT FoodTech
Rusthallsgratan 21, Box 913
SE-251 09 Helsingborg
SWEDEN
Phone +46 42 490 4000
Fax +46 42 490 4040
corporate@jbt.com

Asia

John Bean Technologies
Singapore Pte Ltd
20 Harbour Drive
#04-02 PSA Vista
Singapore 117612
Tel : +65 67766220
Fax: +65 67766229
infoasia-jbtfoodtech@jbt.com

Latin America

John Bean Technologies
Máq. Equip. Ind. Ltda.
Av Eng Luis Carlos Berrini, 1461
9th Floor – Brooklin
04571-903 Sao Paulo BRAZIL
Phone + 55 11 3055 1010
Fax +55 11 3055 1030
latinamerica.info@jbt.com